



TECHNICAL GUIDE

*as of 1st March,2025

1. General Info

Event Name:	Cross-country Race in Misaka Natural Forest Coupe du Japon Misaka International
Date:	Saturday 27th September – Sunday 28th September 2025
Race Type:	XCO UCI Class3
Category:	Men Elite, Women Elite, Men Junior, Women Junior
Venue:	Misaka Natural Forest Kamouno-Misaka, Shimonoseki City, Yamaguchi, JAPAN
Organizer:	Coupe du Japon MISAKA Organizing Committee
Auspices:	Yamaguchi Prefecture, Shimonoseki City, Yamaguchi Cycling Federation, Yamaguchi Cycling Association, Mountain Bike League of Japan
Cooperating:	FEEL, Offroad Bicycle Qsyu, Misaka MTB Club
Suponsors:	SHIMANO/OGK KABUTO
TIMING:	WAKITA SOFT
Secretariat/Contact:	Coupe du Japon MISAKA Organizing Committee
Website:	https://misakanaturalforest.com/
Facebook:	https://www.facebook.com/kurokan.misaka.8555/
Email:	inoue@feelkankyo.com / obqjun@gmail.com

2. Race and Entry Fee *Entry deadline; 8th September 2025

Riders from overseas can pay the fee at the registration office of the venue (JPY ONLY).

Category		Fee	Remarks
Elite	Women	8,000JPY	For JCF or UCI License holders *Japan Domestic Riders are required Team Registration of MTB League https://mtb-l.jp
	Men		
Junior	Women	7,000JPY	
	Men		
Youth	Women	6,000JPY	
	Men		
Masters	Women	8,000JPY	
	Men		
Advance	Men	7,000JPY	
Challenge	Women		
	Men		
Open	Women	6,000JPY	<u>No</u> JCF and UCI License holders
	Men		

3. Time Schedule

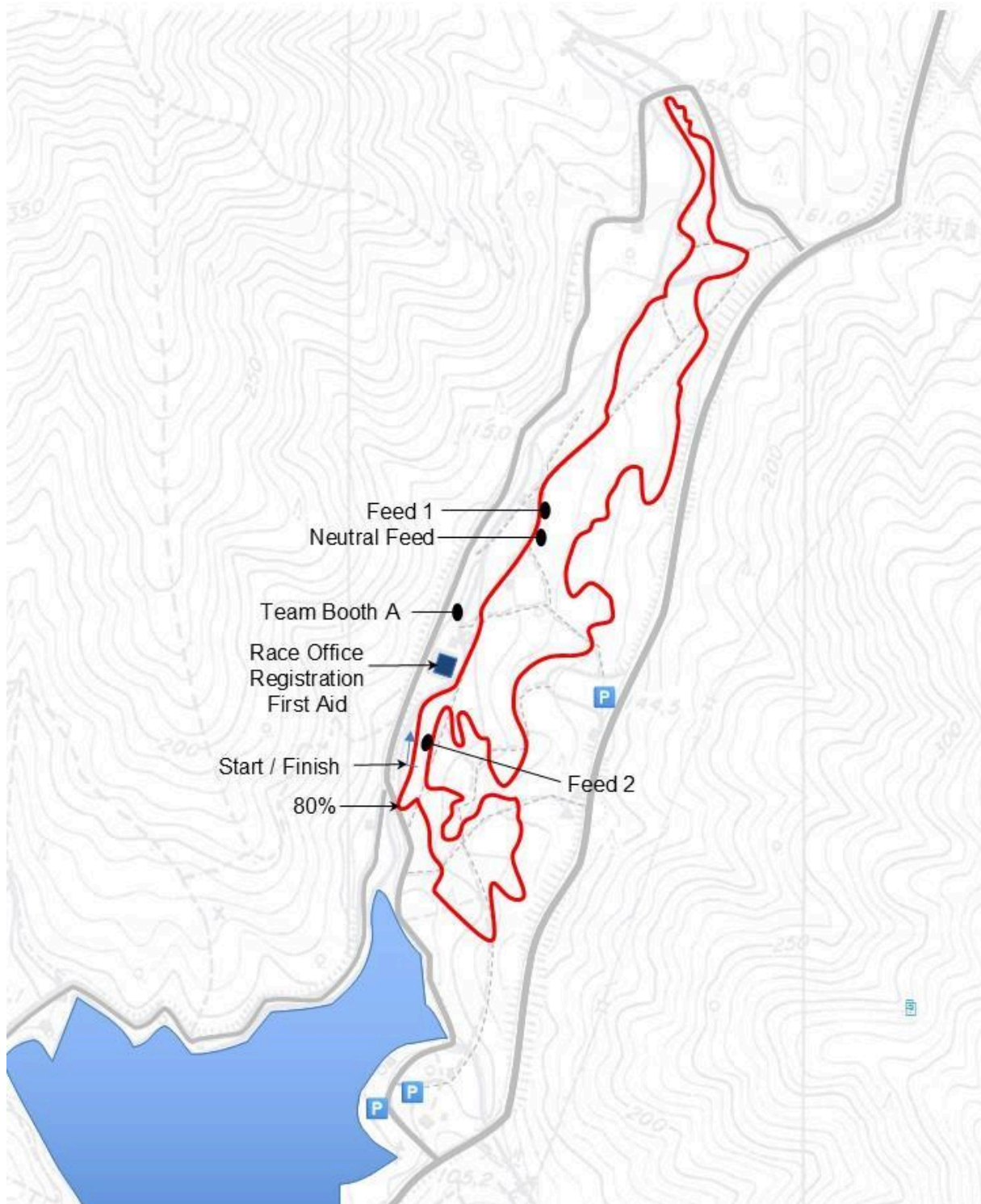
27 th September (Saturday)	
08:00-16:00	License Control / Registration
08:30-09:30	Official Training
13:00-16:00	Official Training
16:15-	XCC(Men Elite)
17:00-	Team Manager Meeting
28 th September (Sunday)	
08:00-10:00	License Control / Registration
08:00-08:30	Official Training
	Men Advance Men Challenge / Men Open
	Men Youth Men Masters
	Women Elite / Women Junior/Women Masters Women Challenge / Women Open
	Men Elite Men Junior

*Awards Ceremony will be held Immediately after each race.

4. Venue Map/Course Map

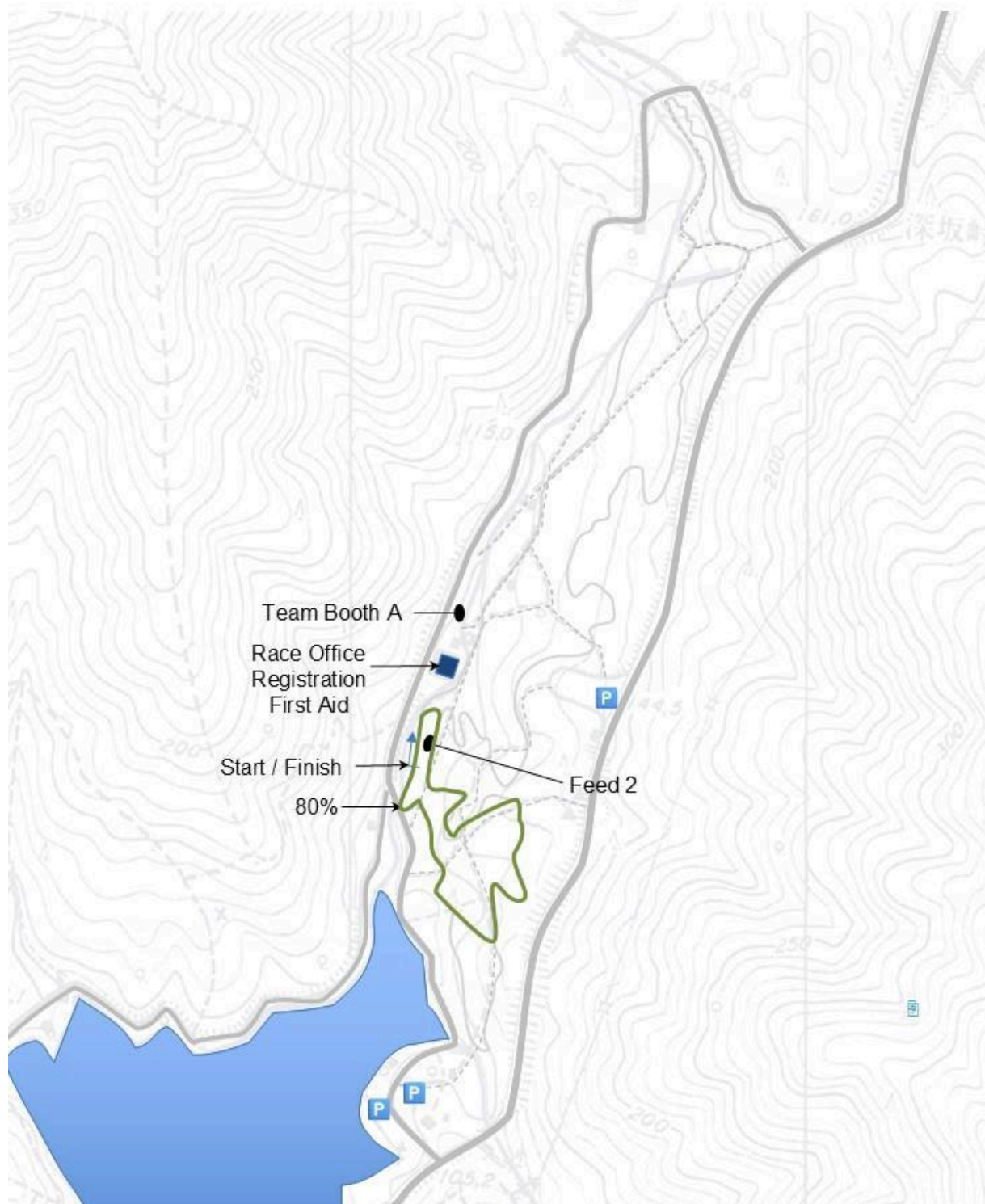
Coupe du Japon Misaka International

XCO

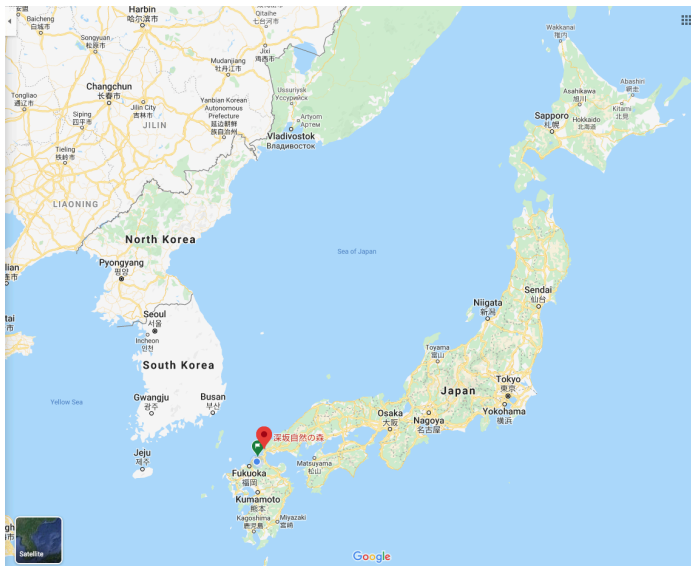


Coupe du Japon Misaka International

XCC/Start Loop

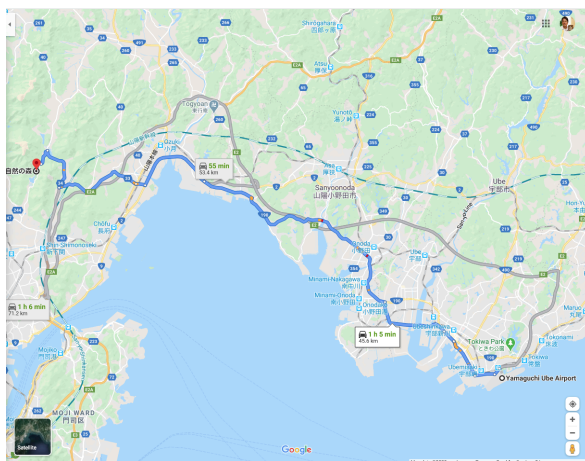


5 Access



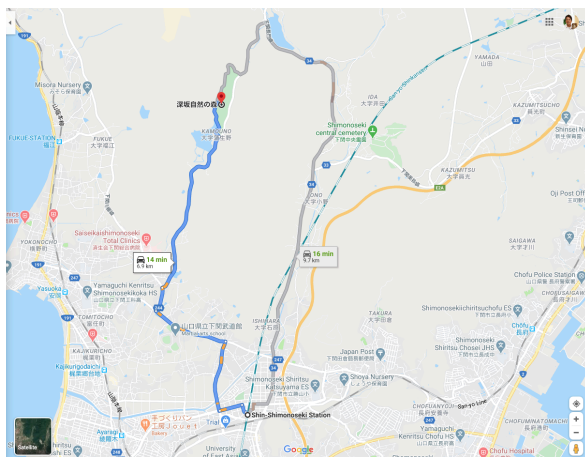
●From Yamaguchi Ube Airport

About 1hour/50km by car.



●From JR Shin-Shimonoseki Station

About 15mins/7km by car.



6. Prize Money

Prize money will be distributed according to the most updated UCI MTB Financial Obligations. Referencing the table below.

Rank/Place	Elite	Junior
1 st	€ 200	€ 65
2 nd	€ 150	€ 50
3 rd	€ 100	€ 30
4 th	€ 75	€ 25
5 th	€ 50	€ 20

2022 UCI MTB Financial Obligations

7. UCI Point Scale

UCI points will be awarded for XCO Men Elite, Women Elite, Men Junior and Women Junior in accordance with ANNEX 2 - UCI MTB XCO points of the UCI Regulations. Referencing the tables below.

Rank/Place	Elite	Junior
1	10	20
2	6	18
3	4	16
4	2	14
5	1	12
6	x	10
7		8
8		6
9		4
10		2
		x

UCI CYCLING REGULATIONS PART 4 MOUNTAIN BIKE / ANNEX 2 - UCI MTB XCO points

8. XCC on Saturday Men's Elite Only

The maximum of 24 top ranked athletes (without additional entry fee) in the participate in the Cross Country Olympics of the same event will participate.

9. XCO Staging Order

Suggest to replace the XCO staging order as below:

1. top 5 of the XCC held on the 27th September, 2025
2. as per the latest published UCI individual rankings
3. as per the latest published Nation rankings
4. as per the latest published National individual rankings
5. unclassified riders: Distribution order of riders' numbers on 28th September, 2025
6. other unclassified riders: by drawing lots

10. Hospital Information

Saiseikai Shimonoseki General Hospital

8-5-1 Yasuoka-cho, Shimonoseki, 759-6603, Japan

083-262-2300

5 min by car

